

## 2022 KPWCA Membership Form

### Member Information

All information provided will be entered into the Membership Database

**PLEASE check the boxes on the left below for information you want published in the Directory**

|  |   |                          |              |  |
|--|---|--------------------------|--------------|--|
| If boxes are not checked, we cannot publish your info in the Directory | } | <input type="checkbox"/> | Name         |  |
|  |   | <input type="checkbox"/> | Address      |  |
|  |   | <input type="checkbox"/> | Home Phone   |  |
|  |   | <input type="checkbox"/> | Cell Phone 1 |  |
|  |   | <input type="checkbox"/> | Cell Phone 2 |  |
|  |   | <input type="checkbox"/> | Email        |  |

Please enter amounts you would like to contribute to the following organizations or activities:

#### KPWCA Committees, Activities and Communications

|      |   |
|------|---|
| \$25 | 1 Membership Fee (\$25 required for each household) |
|      | 2 Herald Newsletter                                 |
|      | 3 Common Grounds Maintenance                        |
|      | 4 Parks & Lake                                      |
|      | 5 Scholarships                                      |
|      | 6 Scout Packs and Troop                             |
|      | 7 Halloween Fall Festival                           |
|      | 8 Spring Egg Hunt                                   |
|      | 9 Unrestricted Community Use                        |



#### Other Community Support

|  |                                  |
|--|----------------------------------|
|  | 10 Volunteer Fire Department     |
|  | 11 Robinson All Night Grad Party |
|  | 12 Pools in Our Community        |
|  | 13 Braddock Nights               |

**Volunteer Opportunities**  
 Block Captain, Membership or Directory  
 Dumpster Day - Herald Newsletter  
 Welcome Committee - Parks and Lake  
 Streets and Signboards - Spring Egg Hunt  
 Halloween Fall Festival

**Total Dollar Amount**

Please make checks payable to **KPWCA** and mail to:  
**KPWCA, P.O. Box 7114, Fairfax Station, VA 22039-7114**

Check appropriate box or enter details below

or return to your Block Captain

or pay via PayPal: [tinyurl.com/KPWCA-Pay](https://www.tinyurl.com/KPWCA-Pay)

#### Payment Type

Cash

Check #

**Volunteering:** I'd like to learn more about volunteering with: \_\_\_\_\_

PayPal Payer's Name

## **Two Important Pieces of information:**

1. **Total Donation Amount** - You'll need to know this regardless of which payment type and which form you use. It will be the total amount you pay via cash, check or PayPal. We recommend that you calculate this amount before continuing. (Review page 1)
2. For on-line payments, in order to create an association between your payment and your membership form, you need to include your **PayPal Payer's Name** near the box at the bottom of the form. So, when you make your on-line payment, jot down the name associated with your PayPal account and then complete the membership form.

## **Instructions for Paying with PayPal**

Go to the [tinyurl.com/KPWCA-Pay](http://tinyurl.com/KPWCA-Pay) webpage.

Enter your Total Donation Amount. Then, click one of the two ways to donate. If you choose to pay with a card, you'll be prompted for additional information. **Make a note of your PayPal/Card payer name for your membership form.**

Donate to  
Kings Park West Civic Association, Inc

\$25.00  
USD

Donate with PayPal

Donate with a Debit or Credit Card

## **Instruction for Completing the On-line Membership Form**

Go to the [kpwca.org](http://kpwca.org) homepage, click on the green Google Membership button and follow the on-line prompts.

## **Instruction for Completing the Paper Membership Form**

1. Print out page one of this document and complete it by hand (Make sure your handwritten data is perfectly legible before giving it to your Block Captain.)
2. Be sure to enter the Total Dollar Amount of your donation: (\$25 Membership Fee + any additions)
3. If paying by Cash, check the "Cash" box. If paying by Check, write in the check number. If paying by PayPal enter the PayPal Payer's Name at the bottom of the form.
4. Then, give the completed form and any check or cash to your Block Captain.

***If you don't use the on-line Membership Form, it's imperative that you give the completed paper form to your Block Captain.***

If you have any questions, please don't hesitate to contact us at [membership@kpwca.org](mailto:membership@kpwca.org).



December 2021

Vol. 51, Issue 7

Kings Park West Civic Association

Hey Neighbors!

As I pen this note, we are heading into Thanksgiving, which is a time to give back and reflect. I am so thankful for all the wonderful folks living in KPW and the kindness and generosity I see on a regular basis.

I'm no Pollyanna (but I have been accused of seeing the world through rose colored glasses), so I also recognize some of the challenges and difficulties people have been facing in the past year-and-a-half and some of the less-than-ideal actions of some.

With that in mind, I would note that "Giving Tuesday" back in late November kicked off the giving season, and I hope that sentiment continues this month. Find a place to volunteer and help out some less fortunate, if you can; maybe amp up your reduce-reuse-recycle activities to give back a little to our planet. Climate change is very much on my mind, and I am personally trying to find ways to lessen my footprint and impact on the earth.

I ask that when you're driving around the neighborhood, please be mindful of people walking or biking and perhaps take a breath instead of speeding by someone or around a car making a turn. Especially since it's darker longer now, that extra moment could make a huge difference for someone in the street or sidewalk, but probably won't cause anyone to really be late for something!

Please continue to watch our Facebook page (search Kings Park West), as well as our website (kpwca.org) for more information. As always, I look forward to hearing your ideas and suggestions for what you might like to see the Civic Association do (within reason!), so feel free to email me at [president@kpwca.org](mailto:president@kpwca.org) for more information or with ideas.

Chanukah is in our rear-view mirror, Christmas and Kwanzaa are not far off... but I'm sure there are those in our area celebrating other holidays as well, so I will wish each and every one of you in KPW a simple Happy Holidays!

See you around the neighborhood.

**Sarah G.J. Lennon**  
President, KPWCA

### Community Calendar

Winter Begins – December 21  
 KPWCA Board Meeting – December 21  
 Christmas Day – December 25  
 Herald Deadline – January 5, 2022  
 Herald delivery: January 29, 2022

| <b>Kings Park West Civic Association</b><br>P.O. Box 7114, Fairfax Station, VA 22039-7114<br>General Information: <a href="mailto:info@kpwca.org">info@kpwca.org</a>   Community Association: <a href="mailto:kpwhoa@yahoo.com">kpwhoa@yahoo.com</a>   Website: <a href="http://kpwca.org">kpwca.org</a> |  |  |                                  |
|--|--|--|----------------------------------|
| Officers   |  | Email  | Phone                            |
| President  | Sarah Lennon                                       | <a href="mailto:president@kpwca.org">president@kpwca.org</a>   | (703) 978-5608                   |
| Vice President   | Mike Stonkey                                       | <a href="mailto:vp@kpwca.org">vp@kpwca.org</a>   | (703) 509-9725                   |
| Secretary  | Karen Cosgrove                                     | <a href="mailto:secretary@kpwca.org">secretary@kpwca.org</a>   |                                  |
| Treasurer  | Karen Emmons                                       | <a href="mailto:treasurer@kpwca.org">treasurer@kpwca.org</a>   |                                  |
| Members-at-Large   | Kaycie Blaylock<br>Donna Thomas<br>Jonathan Reiser | <a href="mailto:boardmember2@kpwca.org">boardmember2@kpwca.org</a><br><a href="mailto:boardmember1@kpwca.org">boardmember1@kpwca.org</a> |                                  |
| Committees   |  |  |                                  |
| Common Grounds Maintenance   | Laura Hall<br>Linda Reamy                          |  | (703) 978-6641<br>(703) 978-1564 |
| Community Support Services   |  |  |                                  |
| Consumer Affairs   | Mary Hovland                                       |  |                                  |
| Dumpster Day   | Mary Hovland                                       |  |                                  |
| GMU Student Liaison  | Vacant   |  |                                  |
| Neighbor Assist  | Bruce Wallachy                                     | <a href="mailto:KPWNeighborAssist@gmail.com">KPWNeighborAssist@gmail.com</a>   |                                  |
| Welcoming  | Natalie Croitoru                                   | <a href="mailto:welcome@kpwca.org">welcome@kpwca.org</a>   |                                  |
| Communications   |  |  |                                  |
| Herald Content Editor  | Monica Grover                                      | <a href="mailto:editor@kpwca.org">editor@kpwca.org</a>   |                                  |
| Herald Communications Editor   | Rose Luczak  | <a href="mailto:editor@kpwca.org">editor@kpwca.org</a>   |                                  |
| Herald Advertising and Classifieds   | Gayle Ostrom                                       | <a href="mailto:classifieds@kpwca.org">classifieds@kpwca.org</a>   |                                  |
| Signboards   | Adrienne Barna                                     |  | (703) 323-0518                   |
| Web Admin  | Tim Hartle   | <a href="mailto:website@kpwca.org">website@kpwca.org</a>   | (703) 200-8375                   |
| Membership   | Nick Schumaker                                     | <a href="mailto:membership@kpwca.org">membership@kpwca.org</a>   |                                  |
| Parks and Lake   | Tom McCook   | <a href="mailto:parks@kpwca.org">parks@kpwca.org</a>   |                                  |
| Invasive Species   | Greg Sykes   |  | (703) 426-8246                   |
| Special Activities   |  |  |                                  |
| Spring Egg Hunt  | Pack 1967  | <a href="mailto:vp@kpwca.org">vp@kpwca.org</a>   | (703) 509-9725                   |
| Halloween Festival   | Keith Jodoin                                       | <a href="mailto:kjodoin@gmail.com">kjodoin@gmail.com</a>   |                                  |
| Scholarships   | Gayle Ostrom                                       | <a href="mailto:geeostrom@gmail.com">geeostrom@gmail.com</a>   |                                  |

|  |   |
|--|---|
| <p style="text-align: center;"><b>How do I join the Kings Park West Civic Association?</b></p> <p>Send your name, address, and phone number, along with a check for \$25 to KPWCA, P.O. Box 7114, Fairfax Station, VA 22039-7114, or visit <a href="http://kpwca.org">kpwca.org</a> and pay via PayPal. Members receive the Community Directory and support from community programs like Scholarship Awards, community school activities, parks and lakes clean-up, and a free subscription to The Herald.</p>   | <p style="text-align: center;"><b>How do I get my news in The Herald?</b></p> <p>The easiest way to get your news items in The Herald is to email the editor at <a href="mailto:editor@kpwca.org">editor@kpwca.org</a>. We invite items on neighborhood schools, churches, organizations, and other noteworthy neighborhood news. News items and letters will be published if deemed suitable and as space permits. We reserve the right to edit any item submitted to The Herald. Acceptance of news items does not constitute endorsement by the KPWCA.</p>   |
| <p style="text-align: center;"><b>The Herald</b></p> <p>Published eight times a year by the KPWCA. Next deadline: January 5 for delivery on January 29, 2022. Note: Acceptance of articles and advertising does not constitute endorsement by the KPWCA, nor liability for products or services advertised in its publications. Subscriptions: If you are moving out of the neighborhood and want to keep in touch with community news, get a subscription. Send \$25 per year to: Kings Park West Civic Association, P.O. Box 7114, Fairfax Station, VA 22039-7114.</p> | <p style="text-align: center;"><b>How do I advertise in The Herald?</b></p> <p><b>Classifieds:</b> Classified ads for the April issue must be received no later than January 5, 2022 to Gayle Ostrom, 4912 Gainsborough Drive, Fairfax, VA 22032 or at <a href="mailto:classifieds@kpwca.org">classifieds@kpwca.org</a>. Please print clearly and include payment to KPWCA. Provide your name, address, and phone number. Rates: \$5 per issue for 35 words or \$40 per year (8 issues/35-word ad). Found items listed free. <b>Advertisements:</b> Advertisements are received by Gayle Ostrom; please email <a href="mailto:classifieds@kpwca.org">classifieds@kpwca.org</a> for rates.</p> |

## Volunteer Opportunities

**Friends of Royal Lake (FORL) Trail Maintenance Volunteers:** Every three months, the FORL organizes a morning when neighborhood volunteers work to improve areas in need of attention on the trail around the lake. For more information, please contact Andy Karp, FORL trail maintenance lead, at [KarpAndy7@gmail.com](mailto:KarpAndy7@gmail.com).

**KPWCA Sign Posting:** *30 minutes per month.* KPWCA maintains three signs that serve to keep KPW residents informed of community activities. We have a team for each sign and would like to add a member to each team. Responsibility is to post announcements provided by the KPWCA Board periodically throughout the year.

**Parks & Lake Committee:** *A few hours per month in the months leading up to the April and October clean-ups.* We are looking for 3-5 motivated members to help plan and organize twice-a-year park/lake clean-ups. Please contact [KPWRoadRaiders@gmail.com](mailto:KPWRoadRaiders@gmail.com).

**Neighbor Assist Volunteers:** *As needed.* Looking for friendly callers (a great way to volunteer without having to leave your home), computer experts to provide IT assistance, and handyman volunteers. Contact Bruce Wallachy at [wallbdc@gmail.com](mailto:wallbdc@gmail.com).

**Road Raiders:** *30 minutes month.* Performs common area clean-up around neighborhood once per month early Saturday mornings. Please contact [KPWRoadRaiders@gmail.com](mailto:KPWRoadRaiders@gmail.com).

**Invasive Management Area:** *3 hours a few times per year.* Details at [grsykes.com](http://grsykes.com). Send an email to [greg@grsykes.com](mailto:greg@grsykes.com) and ask to be on the volunteer distribution list.



KPW Real Estate Corner  
by Cathy DeLoach



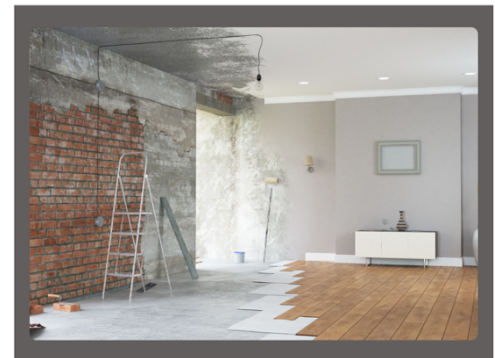
### Are Major Renovations in Kings Park West "Worth It"?

A question I get asked a lot: "Is it worth it financially to do a major renovation (think adding square footage, moving walls, modifying floor plan, etc)? It's almost always a no-brainer to upgrade finishes, appliances and color schemes to reflect a more current aesthetic, but putting \$150,000 into your home with no idea of return on investment can be daunting to contemplate.

We continue to see buyers seeking out our neighborhood, undeterred by higher sales prices and bidding wars. The amenities and location of Kings Park West have enduring popularity with buyers, even as prices approach 800k and above. A recent transaction of a King model that sported a \$180,000 addition (2003 prices) closed for \$958,000. The next highest King transacted in recent months - nicely updated but not expanded - sold for \$740,000, more than \$200,000 less. So we have evidence that a thoughtful, high-end upgrade resulted in not only a great return but years of improved living in their home. The takeaway? Our KPW homes are worth upgrading and the neighborhood can now certainly support investments in larger additions and home modifications--especially if you plan to live in them for a while!!

#### KPW Home Sale Stats

YTD Sold: 85  
Average Price: \$711,172  
Range: \$540,000-\$958,000



# kings park west herald's list

[www.facebook.com/groups/HeraldsList](http://www.facebook.com/groups/HeraldsList)



by cathy deloach



We are dedicated to keeping it clean in KPW. Last month, our contest prize was free window cleaning. Congratulations to **Edie Lowe** who will be seeing things more clearly now, thanks to E&R Services.

If your gutters need help, head on over to the Kings Park West Herald's List and look for this picture. In the comments, please put "my gutters are dirty." A winner will be selected at random on January 1, 2022.

**Deadline to comment: December 31, 2021.**

Services provided by:



**(888) 329-8859**

**info@erservicesinc.com**

gutter cleaning • window cleaning • deck washing • power washing

## Join the Kings Park West Civic Association

Hi Neighbors,

Thank you to everyone who joined or renewed your membership in the Kings Park West Civic Association during the October Membership Drive! If you haven't had a chance to pay your dues for 2022, it's not too late. There are two convenient ways to do so:

Visit [kpwca.org](http://kpwca.org) to fill out the membership form and pay your dues online.

Complete the membership form provided here and pay your dues by check (you can give them to your Block Captain or mail them to KPWCA, P.O. Box 7114, Fairfax Station, VA 22039).

In 2021, just under half of KPW's roughly 1,800 households joined the Civic Association. Our goal is to boost that number to 1,000 for 2022—but we need your help to get there!

Member dues are just \$25 each year, but they support many community benefits we all enjoy:

- Landscaping maintenance at neighborhood entrances
- Park restrooms and dog waste stations
- Dumpster Day

- The Herald and membership directory
- Scholarships for graduating seniors
- The Fall Festival and Spring Egg Hunt
- And so much more!

We are so grateful to all our members who step up to support our community, and we send a special thank you to those who are able to make additional donations that fuel our efforts. I also want to acknowledge the hard work and dedication of our Block Captains, who are the heart of the October Membership Drive and a vital link between the Civic Association and neighbors.

As we near the end of the year, we hope you will consider joining the KPW Civic Association. Our work is only possible with your support.

For more information about the Civic Association, membership, or serving as a Block Captain, please email [membership@kpwca.org](mailto:membership@kpwca.org).

Thank you,

**Nick Schumaker**  
Membership Committee Chair  
Kings Park West Civic Association

## Welcoming New Neighbors

Did you get a welcome packet when you moved to KPWCA? Do you still use the paper packet materials?

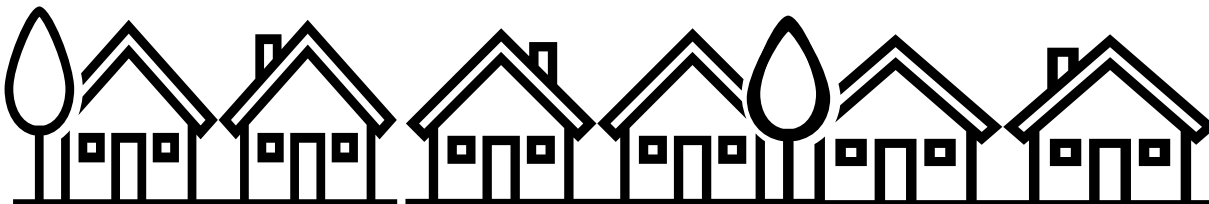
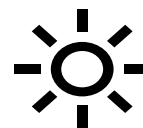
We would like to know what you think about our idea of minimizing our paper waste and moving these materials online!

We'd like to be environmentally conscious and keep things up to date, so the welcome committee is making our welcome packets smaller and moving the materials online. Need a bus route? Need a list of restaurants? Want to see what our schools have to

offer? You can find it all on the KPWCA website at [www.kpwca.org](http://www.kpwca.org).

Our welcome packet will be smaller and provide references to online materials, but it will still include critical items like our neighborhood map and directory, our fabulous vehicle stickers, and a few additional items.

If you like this idea please let us know by emailing [welcome@kpwca.org](mailto:welcome@kpwca.org) and if you don't, we welcome your input and ideas!



# Compliance Corner



## Vehicle Storage

### *Do you know Fairfax County's rules for storing vehicles on residential property?*

Fairfax County regulates the storage of inoperative vehicles, vehicles under tarps, and vehicles that are covered with fitted car covers.

#### **Inoperative Vehicles:**

- Chapter 110 of the Fairfax County Code and Article 4 of the Zoning Ordinance regulate inoperative vehicle storage in residential areas.
- An inoperative vehicle is any motor vehicle, trailer, or semitrailer that is not in operating condition, does not display valid license plates, or does not display an inspection decal that is valid or does display an inspection decal that has been expired for more than 60 days.
- On residential properties, inoperative vehicles must be kept within a fully enclosed structure or completely screened from view in accordance with the County Code.
- To make a complaint about more than five inoperative vehicles located on private property, call the **Department of Code Compliance** at 703-324-1300, TTY 711 or report online at [www.fairfaxcounty.gov/code](http://www.fairfaxcounty.gov/code).
- To make a complaint about five or fewer inoperative vehicles located on private property, please contact the Fairfax County Police Department's Impound Office at 703-280-0716 or report online at [www.fairfaxcounty.gov/police/report-inoperable-vehicle](http://www.fairfaxcounty.gov/police/report-inoperable-vehicle).
- To report an inoperative vehicle on a public street, please call the Police Department's non-emergency number at 703-691-2131.

**Vehicles under Tarps:** Any vehicle covered by a tarp is subject to the outdoor storage regulations of Article 4 of the Zoning Ordinance.

**Vehicles under Fitted Car Covers:** On a residential lot, up to two vehicles may be kept under fitted car covers specifically designed for this purpose.



To report a possible violation OR for more information contact:

Fairfax County Department of Code Compliance  
12055 Government Center Parkway, Fairfax, VA 22035  
Phone: 703-324-1300, TTY 711  
Web: [www.fairfaxcounty.gov/code](http://www.fairfaxcounty.gov/code)



To request this information in an alternate format, call the Department of Code Compliance.

This Fairfax County, VA Publication (published July 2021) summarizes a few regulations. See relevant codes for specific requirements.



## Friends of Royal Lake: What We've Done and What's Next!

By Sarah G. J. Lennon and Paul Gross

In last year's December Herald, we wrote about how much we appreciate all the dedicated, hardworking volunteers who lead Friends of Royal Lake (FORL) and related activities.

This year, we're reflecting on what FORL has accomplished since we developed the FORL Community Vision Plan for Royal Lake Parks a few years back and the supporting point papers listing all desired improvements in and around the lake that we shared frequently with county officials.

It is worth noting that—using that Vision Plan as a baseline—FORL volunteers, together with Park Authority and Department of Public Works and Environmental Sciences (DPWES) officials, have accomplished the following:

**Lakeside Park** - A new trail segment, removal of the juniper bushes, a small bridge replacement (with culvert), new shade trees, and a new drainage system to remove standing water on the trail

**Royal Lake Park** - Several trail improvements and maintenance, installation of steps in steep areas of the trail, and removal of invasive plants replaced with native plants

**Both parks** - Trail paving, better drainage in high traffic areas, and ADA compliance

The Vision Plan was developed in part with community comments gathered through SurveyMonkey and

several community discussion forums. In our estimation, it's time for a new survey and an updated Community Vision Strategic Plan for Royal Lake and its surrounding parks.

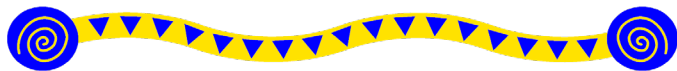
**It is also time for an infusion of new volunteer energy in the leadership team!**

We need:

- A secretary/notetaker
- A social media guru with ideas to build community support
- Perhaps most urgently, a new editor for the FORL quarterly newsletter. It could be a team of people, could be a student... whatever works!

Please look for opportunities in early 2022 to participate in FORL's effort to update the Vision Plan, which will again be presented to the Fairfax County Park Authority, DPWES, and our Braddock District supervisor.

A final note: We send heartfelt THANK YOUs to the project volunteers, those who took the previous survey, those who attended our community-wide meetings, and everyone who shared thoughts and expertise as we developed the Vision Plan. FORL is very grateful for all the caring and community-minded neighbors. Our little corner of the world is better off because of you!



### Lord of Life Lutheran Church ESL Classes

Tuesdays and Thursdays, 7:00 to 9:00  
PM

Classes start: January 25  
Classes end: April 14

**Cost: \$20**

In-person classes will meet on:  
1/25, 1/27, 2/1, 2/3, 3/8 and 3/10  
All other classes will be online

Internet access required for Zoom  
classes

**Online registration: starts  
December 15  
[www.lordoflifeva.org/esl](http://www.lordoflifeva.org/esl)**

In-person placement testing on  
January 20, at 7:00 pm for students  
with confirmed online registration

Testing and in-person classes will be  
held at:

**Lord of Life Lutheran Church**  
5114 Twinbrook Road  
Fairfax, VA 22032

# ELECTRICAL

**DEPENDABLE SERVICE**



# SOLUTIONS

**REASONABLE RATES**

---

RESIDENTIAL ♦ COMMERCIAL

- ♦ Troubleshooting & Repair Work
- ♦ Electrical Service Upgrades
- ♦ Lightning & Surge Protection
- ♦ Security Lighting
- ♦ Home Inspection Repairs
- ♦ New Circuits
- ♦ Network Computer Cabling
- ♦ Hot Tubs & Pools
- ♦ Home Theaters



703-922-2040

FREE Phone Estimates



Save 6% to 30% on your Energy Bill

- ♦ Optimize your Electricity
- ♦ Increase the Life of Appliances
- ♦ Reduce Your Carbon Footprint
- ♦ UL Listed and CSA Approved
- ♦ Installs In About An Hour!

Go Green & Save Money  
with KVAR Energy Controllers

[www.ElectricalSolutionsLLC.com](http://www.ElectricalSolutionsLLC.com)

[www.SaveALotOfEnergy.com](http://www.SaveALotOfEnergy.com)



Mention this ad and receive 10% off service charge



Same Day Service

Licensed • Bonded • Insured

24/7 Emergency Service



## CALL THE OUTDOOR MAN TODAY TO SCHEDULE YOUR FALL CLEAN UP!

Fall Clean Up can include: Leaf Removal, Selective Perennial  
Cut back and Shrub Trimming

Licensed and Insured  
Veteran Owned



www.theoutdoorman.us  
703-425-1748



**Gidders and Sons Plumbing, LLC**  
 VA License # 2710 041727  
 2017, 2018, 2019 "Best Plumber", Nextdoor KPW





**Personalized neighborhood plumbing!**  
 Repair or replace all types of fixtures including...  
 ...Hot water heaters, gas fireplaces,  
 ...Kitchen fixtures including gas,  
 ...Bathroom fixtures and much more!  
 ...Drain cleaning and camera inspection  
**Complete renovation of bathrooms.**

**Barney Gidders, Licensed Master Plumber**  
**Patrick Gidders, Licensed Master Plumber**  
**Steve Ueltschi, Licensed Master Plumber**  
**Jose Guzman, Licensed Master Plumber**

703/250-1807 Office, 703/850-9590 Cell  
[www.giddersplumbing.com](http://www.giddersplumbing.com)  
[Barney@giddersplumbing.com](mailto:Barney@giddersplumbing.com)

**MOWING & TOWING**



**Your  
 Outdoors  
 Is Our Office!**

*We are family  
 owned & operated,  
 licensed & insured.*

www.MOWINGTOWING.COM  
**703 - 865 - LWN1**  
 mowingtowing@yahoo.com

Contact us  
 for a free quote!

**Mowing & Towing, LLC's services include:**

- Mowing
- Fertilizing
- Dethatching
- Lawn Renovation
- Full Size & Mini Skid Steer Work
- Mulching & Garden Bed Edging
- Core Aeration with or without Overseeding
- Bush & Small Tree Trimming & Removal
- Hardscape and Landscape Installation
- Full Service or Curbside Leaf Cleanup & Removal
- Site Work & Grading
- and much more!
- Sod Installation
- Material Delivery
- Debris Removal
- Driveway Dumpster








**FREE Introduction Evaluation for KPW Residents!**  
 A Dog's Day Out Springfield only.

5425-B Port Royal Road, Springfield, VA 22151  
 703-321-DOGS | infospringfield@adogsdayout.com

adogsdayout.com   

## IMA: Update

By Greg Sykes ([greg@grsykes.com](mailto:greg@grsykes.com))

2021 was a banner year for the Invasive Management Area (IMA) efforts within the Royal Lake watershed! Briefly, IMA is a habitat restoration program overseen by the Fairfax County Park Authority (FCPA) where trained volunteer site leaders head workdays to remove specific invasive plants and add natives as needed. All of this work is accomplished through FCPA permits on FCPA land using hand tools; only FCPA staff and contractors may apply herbicides and operate power tools. The Royal Lake system benefits from currently having seven site leaders. Some work is conspicuous in scope and location while other operations are off-trail in remote parts or targets small patches. Since the site leaders collaborate, this article is an overview of the activity instead of crediting individual leaders. The primary strategy employed throughout the parks is to stop the spread of invasive plants especially at places where they produce copious amounts of seed that can transfer elsewhere.

The ground remained thawed during most of the warm winter. Returning to monitor previously worked sites, the soft soil aided volunteers in removing roots and seedlings of IMA targets like Amur honeysuckle (*Lonicera maackii*), multiflora rose (*Rosa multiflora*), and porcelain-berry (*Ampelopsis brevipedunculata*) that were missed earlier. These patrols throughout the year help keep the weeds at bay while encouraging native plants to repopulate. Monitoring includes checks on various park sites and habitats to assess the health, look for invasive species, and observe the recovery of restored sections.

Spring saw the return of garlic mustard (*Alliaria petiolata*) season. This biannual of the mustard family has white flowers blooming atop stalks that reach up to four feet. Its seeds can last 8-10 years in the soil before germinating, so yearly pulls are the key to controlling this weed. Expanses with years of previous work had much less garlic mustard than newly opened plots. To cover territory efficiently, site leaders hosted many workdays in divided zones around the lake, Shanes Creek, and parkland below Commonwealth Boulevard. There were some workdays attacking the garlic mustard in Rolling Woods Estates Park, a three-acre park surrounded by houses but still falls within the Royal Lake watershed. All of these efforts resulted in a broader assault on this weed than ever before!

Summer actions around Royal Lake included continued work by the western loop (near the Glen



*ICS volunteers use Weed Wrenches to extract invasive shrubs with roots intact. These efficient tools cause minimal soil disturbance. Photo by Greg Sykes.*

Cove I townhouses), where the predominant targets are porcelain-berry, Himalayan blackberry (*Rubus armeniacus*), multiflora rose, and Amur honeysuckle. Massive eradication of porcelain-berry and Amur honeysuckle occurred between the Chatsworth Court entrance and the dam (next to Lakepointe). The stumps were left in the ground, marked with paint, and FCPA staff will soon treat these remnants with herbicide. This approach is necessary here because the slope is steep and removing the roots before natives can grow back would expose the soil to erosion. The main Lakeside Park entrance and surrounding area enjoyed a huge purge from invasive weeds. The IMA targets here include all of those previously discussed plus Chinese privet (*Ligustrum sinense*), wax-leaf privet (*L. japonicum*), English ivy (*Hedera helix*), oriental bittersweet (*Celastrus orbiculatus*), Bradford pear (aka Callery pear, *Pyrus calleryana*), winged burning bush (*Euonymus alatus*), Japanese holly (*Ilex crenata*), and leatherleaf Mahonia (*Berberis bealei*).

IMA relies on volunteers, ranging from students requiring service hours to organizations out to help the planet. IMA at Royal Lake benefitted this year from The Lamb Center (a daytime facility that helps homeless people) paying multiple visits to pull weeds and add native restoration plants. In October, the Immanuel Christian School (ICS) had a group of

students and adults apply their “service” motto to remove many different invasive weeds near a storm drain outfall, where seeds washed in and took root. Days later, Kiefer Haradon earned his Eagle Scout rank by leading a day-long session near the Lakeside Park parking lot, tossing weeds such as Bradford pears, Himalayan blackberry, Chinese privet, and white mulberry (*Morus alba*) into a roll-on dumpster.

IMA activity expanded into Rabbit Branch Park. A swim club was here before closing and the property turning over to FCPA in 2013. That restoration process included adding a native meadow and reforestation. However, mature Bradford pears remained on the plot, are cultivated across the street, and pervade neighboring Kings Park West Community Association land. The call for an IMA site leader to help nurture this park from the start went unanswered. As a result, scores of fast-growing Bradford pears and other invasive weeds invaded the area, began squeezing out the restoration plantings, and matured to start spewing seeds of their own! Local volunteers and an AmeriCorps team cut and piled those fruit-laden trees into both a roll-on dumpster and an additional 56 bags, all destined for incineration since the seeds might survive composting. With a deep tap root, the stumps were too difficult to pull so they were marked for contractors to apply herbicides. Pressure on invasive weeds is effective. Like Rabbit Branch Park, a Royal Lake Park site between the Dundalk Street trailhead and the nearby “Grassy Knoll” entrance at Gainsborough



*1The AmeriCorps volunteers load a dumpster with Bradford pears, exactly where all of these trash trees in the U.S. belong!  
Photo by MaryAnne Boyer*

Drive also is close to a Bradford pear infestation, this one lining half of Claridge Court. Whereas no IMA activity controlled the Bradford pears at Rabbit Branch Park for many years, these weeds never became as

big of a problem at this Royal Lake Park site thanks to IMA volunteers eliminating the scores of saplings from parkland.



*Bradford pears at Rabbit Branch Park grew beyond a healthy density for any tree species. Compared to a wooded environment, they developed much faster in this exposed space, thereby outpacing the native species planted here.*

Local residents sometimes report invasive plants, usually growing in natural areas close to their yards. However, some of these sites are outside of FCPA property and IMA’s jurisdiction. All of the homeowner association (HOA) properties in the Royal Lake watershed, including Kings Park West Community Association, West Park Community Association, Martins Reserve Point HOA, Glen Cove HOA, and Waverlee Woods HOA, have some nasty invasive weeds while also possessing good native habitat that is worth saving. To remove these particular weeds, the justifiably concerned HOA members should first call their respective HOAs into action. After all, healthy land stewardship benefits everyone. Alternatively, residents can seek permission to remove these target weeds themselves or through a licensed contractor. Individuals or entities wishing to eradicate invasive species need to first know the best methods since applying the wrong ones can have undesired consequences such as collateral damage or even spreading the weed even more. Anyone interested in setting up a program modeled after IMA to work outside of FCPA and with the landowner’s permission is welcome to contact me at [greg@grsykes.com](mailto:greg@grsykes.com). We can talk about targets, tools, techniques, logistics, commitments, and training. When people passing by chatted during a workday, some admitted cultivating IMA targets on their property but planned to replace them with natives as the plants died. Unfortunately, those weeds spewing seeds into the environment are doing far more damage season after season than the single specimen is on that plot! Best course: act now and

replace those species with native alternatives. As seen here, there are many ways people can help the effort to stop the spread of invasive plants.

Rabbit Branch Park still needs an IMA site leader, which is fun, educational, and rewarding. If you are interested, contact the FCPA IMA supervisors, Patricia Pearl Greenberg ([Patricia.Greenberg@fairfaxcounty.gov](mailto:Patricia.Greenberg@fairfaxcounty.gov)) and Gloria

Medina ([Gloria.Medina@fairfaxcounty.gov](mailto:Gloria.Medina@fairfaxcounty.gov)). Have another FCPA plot where you would like to be an IMA site leader? Let them know about it, too!

The online version of this article, with color pictures and links to additional resources, is at [http://www.grsykes.com/pdf/eco-articles/110\\_2021-12.pdf](http://www.grsykes.com/pdf/eco-articles/110_2021-12.pdf).

## Does your Electrical Panel need a Health & Safety Check?

### Yes, if it's over 30 years old!

Many older circuit panels were manufactured with dangerous flaws\*. Aging parts can malfunction, melt down and catch fire, endangering your home.

Protect the health and safety of your electrical panel, house and family today...

### Contact our Panel Expert now to schedule a safety check:

\*Request a FREE email copy of our circuit panel research.



**Sarah & Family**  
**ELECTRICAL SERVICES LLC**

**#1 RATED ELECTRICAL SERVICE on nextdoor.com**

- > Circuit Panel service & replacement
- > Residential EV charging stations
- > Lighting, fan & outlet installations
- > Whole house surge suppression
- > Electrical wiring, troubleshooting & repair

*Check our website for 'Up Front Pricing'  
Major Credit Cards accepted*

**703/495-3448**

ryan@sarahandfamily.com | sarahandfamily.com

— Family owned and operated. Licensed and Insured. —



Planting, Clean-Up, Design, Retaining Walls & Patios

Ryan Minton  
ryan@ryans-landscaping.com  
www.ryans-landscaping.com  
<https://www.facebook.com/RyansLandscaping.NOVA>



Office: 703.569.4505  
Cell: 703.967.2939  
Fax: 703.912.7867

P.O. Box 5504  
Springfield, VA 22150

**THE HIGHEST QUALITY CONCRETE IN NORTHERN VA.**

RESIDENTIAL • COMMERCIAL  
25 YEARS EXPERIENCE

- CUSTOM BRICKWORK & FLAGSTONE
- DRIVEWAYS • SIDEWALKS
- STEPS • PATIOS
- REPAIR & RESURFACING

- STONE WALLS
- EXPOSED AGGREGATE
- POOL DECKS
- LICENSED & INSURED
- VERY AFFORDABLE RATES

- FREE ESTIMATES
- REFERENCES AVAILABLE
- "WE DO THE JOB RIGHT THE FIRST TIME."
- CAR PORTS • GARAGES
- CHIMNEY REPAIRS

Call: **WRIGHTS CONCRETE**

**(703) 615-2159**  
**OR (703) 753-4550**




[www.wrightconcrete.net](http://www.wrightconcrete.net)  
Family Owned & Operated  
Deal Directly With The Owner

See Our Website For Coupons




**Free Estimates Cheerfully Given**

GROUP DISCOUNTS • BUILDERS DISCOUNTS

39266EVSB 09-Oct-2013 23:11

# KPW Community Member Spotlight: Judy Poinsett

By Aziza Bayou

Judy Poinsett is an original Kings Park West homeowner who purchased her Prince-model home in the cul-de-sac at the end of Richardson Drive in 1970.

As we sat in her living room and talked, sunlight streamed in from the large rear windows Judy had installed in the mid-1980s. The windows provide a gorgeous view of the lake, and the numerous birds that flock to the backyard feeders overlooking her azalea bushes.

When Judy and her family moved in, there was a creek behind her home, as the lake had not yet been dammed. "When we moved in, everyone met immediately," Judy recalled. Most folks were first time homeowners, and many were military families. They shared tips, tools, and quickly built the relationships that characterize a close-knit community.

By the summer of 1972, the builder-installed sod grass in everyone's yards had died (she thinks they didn't realize how much water it needed!). So together as a group her cul-de-sac neighbors cooperatively undertook removing the dead sod and sowed grass seed.

Her two children, now in their 50s, played with other neighborhood children of the families who had also recently moved in. In summer they swung from vines at the creek, and in winter they sledged down the then-tree-bare hill where the old cemetery is.

Judy noted that there is a freshwater spring near where the old Guinea Road used to run, but access is now near impossible. Judy speculated that the spring may have been a source of fresh water for earlier inhabitants of the area.

Our excellent local schools were the deciding factor in Judy's family's choice to move here. She and her family first heard of KPW because her former husband was given a brochure for the community while stationed in Saigon as an army officer in the late 1960s.

A realtor took them to see another home in Maryland on a golf course (a sport she loves) and even though it was bigger and cost less, her family still decided to live here. While visiting Laurel Ridge, former English teacher Judy said, "I listened to what was happening in the classrooms," and she appreciated the quality of the educational interactions that were taking place there.

In her over 50 years of living in KPW, Judy doesn't think that the strong community feeling she has here changed much, citing factors like bonfire get-togethers, potlucks, assistance with mowing and snow blowing, and mutual help looking after plants and pets when a neighbor goes out of town.

Her cul-de-sac, including some nearby households on Pommeroy Drive and up Richardson Drive, even maintains a hyper-local directory. Having each other's names and contact information makes staying connected even easier.

Judy continues to feel the growth of these community connections that have persisted for over 50 years. "Community and thoughtful, helping neighbors!" are at the center of living well in King's Park West, Judy says. When asked what she

thinks has changed most in this area over the past 50 years, Judy says increased traffic, which most of us know all too well!

Sue is by Judy's side for part of the interview. Sue is an original teacher at Robinson and received numerous honors during the 29 years she spent teaching 8th grade math. Sue has enjoyed living near her students and former students, even teaching their children. Sue noted the good quality construction of KPW homes as yet another reason to love this neighborhood.

Judy and Sue have traveled all over the country in their RV to numerous state and national parks, and never in their time away have they "found another place that made us say 'let's move here'—nothing like KPW."

Where else might Judy have delightfully discovered the serendipitous coincidence that one of her down-the-street neighbors had attended the school in Hawaii where she had formerly taught, and that they shared a mutual friend from there? (Punahau School, where former President Obama attended as well).

Judy's advice to neighborhood newcomers? Get out and walk! "Ours is a walking neighborhood." Sue and Judy can often be found out and about, walking and chatting with neighbors and enjoying the fruits of camaraderie that they have grown over decades.

For those who have been here for a long time, Judy suggests reaching out to new people who have more recently moved here. Whether newer or more established, young, old, or in-between: Judy's advice to get out, introduce yourself, and meet one another, applies to all of us who seek to enjoy the community-centered life that Judy and Sue both exemplify

| RESIDENCE OFFICE  |   | KINGS PARK WEST |          |
|---|---|-----------------|----------|
| 280-1420  | 461-8600  | SECTION IX      |          |
|   |   | FAIRFAX         | VIRGINIA |
| Sales Price   |   | August 26, 1970 |          |
| DUKE  | Type A or B                                       | \$35,500        |          |
| DUCHESS   | Type C & CX                                       | 38,500          |          |
|   | Type D & DX                                       | 38,250          |          |
| QUEEN   | Type G & H<br>(no outside entrance to basement)   | 36,750          |          |
|   | Type GX & HX<br>(walk-out basement)               | 37,250          |          |
| PRINCE  | Type K or L                                       | 37,250          |          |
| KING  | Type N & O<br>(fireplace included in living room) | 37,750          |          |
|   | Type NX & OX                                      | 38,000          |          |
| REGENT  | Type R or S                                       | 39,750          |          |
| 4th Bedroom & full bath in basement of Duke Model                         |   | 1,250.00        |          |
| Gas Air Conditioning  |   | 1,675.00        |          |
| Electric Air Conditioning   |   | 1,250.00        |          |
| Dishwasher  |   | 325.00          |          |
| Fireplace: Living Room  |   | 900.00          |          |
| Fireplace: Recreation Room or Basement                                    |   | 850.00          |          |
| Corner Lots   |   | 300.00          |          |
| Lots adjoining park land  |   | 300.00          |          |
| <b>SCHOOLS</b>  |   |                 |          |
| Elementary - Laurel Ridge   |   |                 |          |
| Intermediate - Holmes   |   |                 |          |
| High School - West Springfield (new school being built known as Robinson) |   |                 |          |
| PRICES ARE SUBJECT TO CHANGE WITHOUT NOTICE                               |   |                 |          |
| Model Home Phone: 461-8600  |   |                 |          |
| 25 August 1970  |   |                 |          |

## Girl Scout Service Unit 54-15 News

Girl Scout Cadette Troop 4141 spent one afternoon in November earning their “New Cuisines” badge, and learning how to make Pad Thai, Sassy Egg Rolls, Crepes, and brownies. Pad Thai was a fast favorite, but the crepes with Nutella and banana slices were an 11 out of 10!



Girl Scout Senior and Cadette Troop 4914 hosted a free outdoor movie night in October. The movie night was a fundraiser for the GS S.H.A.R.E. campaign which supports financial assistance, camps, and volunteer training for local troops. Funds for S.H.A.R.E. help make Girl Scouting possible!



**Please consider donating by scanning the QR code!**

Girl Scouts Junior Troop 54021 and Cadette Troop 1356 went on a co-camping adventure trip to Camp Coles Trip (a camp made possible by S.H.A.R.E.) in West Virginia in November. Both Troops did archery, a low-ropes course, geo-caching, and team building games. They also weathered below-freezing temperatures each night which made for a true Girl Scout adventure!



In October Brownie Girl Scout Troop 54068 joined a group of 1,000+ volunteers to pack 165,000 meals through Rise Against Hunger. Rise Against Hunger is an international hunger relief non-profit organization that coordinates the packaging and distribution of food and other aid to people in developing nations. The girls helped weigh and package small meals that included 20 essential vitamins and minerals which will go to Haiti to support crisis relief efforts. The troop also donated \$260 of their Girl Scout cookie sale proceeds toward Rise Against Hunger, which will help feed two children in need for a whole year. You can learn more about Rise Against Hunger by scanning the QR code. Girl Scouts truly make the world a better place!





## Pack 1967 News

Colder temperatures mean more opportunities for a campfire! And Pack 1967 was up to the task in October when it finally got back to camping as a Pack. The Pack travelled to Camp Wilson in Pohick Bay Regional Park and battled the rain in the afternoon. But even the rain couldn't dampen the Scouts' spirits as they set up their tents, cooked their dinners, had s'mores (of course!) and performed their campfire skits. Scouts explored the woods around the campsite, finding a few frogs in the process. The campout was a great success, and the pack is already looking forward to the next Pack campout in May in Gettysburg, PA.



Also in October, our Bear den (3rd graders) continued our Pack tradition of running the Bear Carnival. Each year, the Bears design, build, and run carnival games for the rest of the pack. This year saw games involving aiming ping pong balls into cups and buckets, a Velcro dart game, badminton games, bean bag throws, and a Plinko game. The Bears did a fantastic job running the carnival and all the Scouts had a wonderful time. Way to go Bears!

The Pack also had its very first flotilla in October! Scouts build boats from recycled materials and used either sails or motors to try to cross Royal Lake. Congratulations to all the Scouts who made their boats!



Pack 1967 is looking for boys and girls from kindergarten through fifth grade. Scouting in-person with safe COVID-19 precautions. Campfires, Pinewood Derby race, outdoor fun, and making new friends. If you're interested in learning more about Cub Scouts, please contact us and join us for a Den meeting.



For more information contact:  
 Matt Jones, Cubmaster  
[CubScout.Pack.1967@gmail.com](mailto:CubScout.Pack.1967@gmail.com)



## Pack 1968

The beginning of fall welcomed back the return of in person activities for Pack 1968! In September, the Scouts participated in a Rocket Derby at the Lakeview Pool parking lot. All participants learned how to build rockets using paper and Styrofoam and then watched their creations soar into the sky. The Rocket Derby was an excellent opportunity for Scouts and their neighbors to develop their STEM and teamwork skills.

On October 9th and 10th, the Pack gathered for a fall campout at Burke Lake Park. The campout began with a hike around the lake identifying different plants and animals. Everyone also got a chance to participate in the agility activities found around the trails during the hike. Next, the boys worked on a variety of den activities, followed by dinner and S'mores around the campfire. After that, the dens performed some entertaining skits before preparing to sleep in the outdoors. Great fun was had by all during this two-day activity!

Later in October, many Scouts arrived in costume for the Pack's monthly meeting. At this gathering, the boys and their siblings got a chance to participate in games created by the fifth-grade Scouts who are working to earn their Arrow of Light rank.

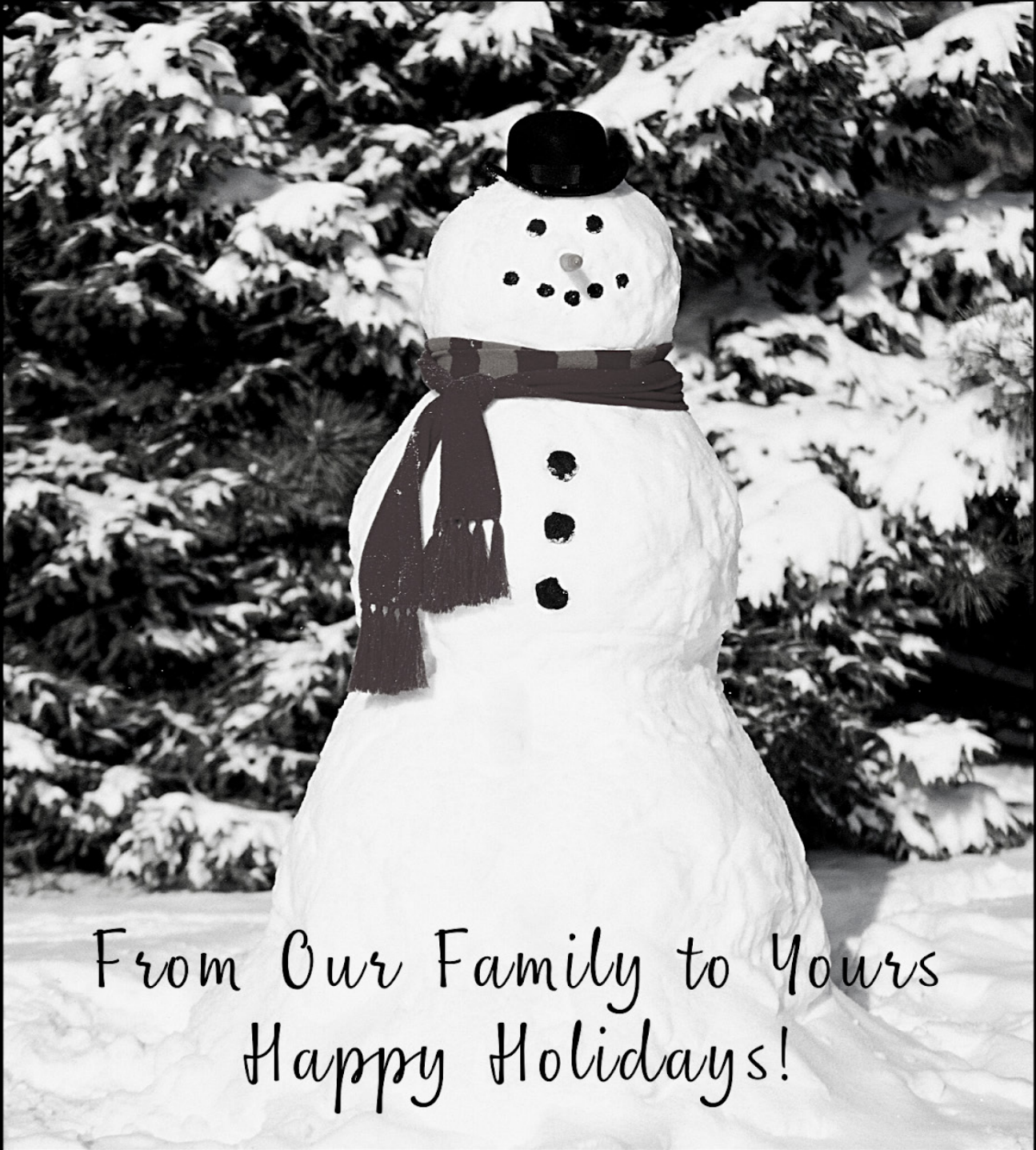
In November, the Scouts helped others by participating in Scouting for Food, an annual

event where they collect food for a local food bank. Pack 1968 is just getting started with exciting and character-developing activities for the 2021-22 school year!



If your son is interested in joining in on the fun and you would like more information about Pack 1968, please email [ccpack1968@gmail.com](mailto:ccpack1968@gmail.com).





From Our Family to Yours  
Happy Holidays!

THE  
**Mary & Cathy**  
*Property Sisters* TEAM

(571) 276-9421

[www.PropertySistersHome.com](http://www.PropertySistersHome.com)  
Long & Foster Real Estate  
6045 Burke Center Pkwy  
Burke, VA 22015  
[TheMaryandCathyTeam@LNF.com](mailto:TheMaryandCathyTeam@LNF.com)

## KPW CLASSIFIED ADVERTISEMENTS

### How to advertise in The Herald:

5 per issue for up to 35 words / \$40 per year (8 issues/up to 35 words)

Mail advertisement and payment (KPWCA) to:

Gayle Ostrom, 4912 Gainsborough Drive, Fairfax, VA 22032 || or email [classifieds@kwpc.org](mailto:classifieds@kwpc.org)

**CHIPPER SHREDDER:** Model series 462 through 464. Mfg by MTD. Very good condition. \$350. KPW resident. Call Paul at 703.615.6865.

**ELEMENTARY TUTOR:** Grades 1-6 for reading, writing and math. Retired FCPS teacher with 30+ years of experience and KPW resident. Call, text, or email Hope Brady at 703.585-0445 or [hmbrady@cox.net](mailto:hmbrady@cox.net)

**COMPETITIVE MATH SERVICES, LLC:** Seriously Fun Math!! Virtual (Skype), in-person (including pods), 7th and 8th grade math, Algebra, Geometry, Pre-Calc, Calculus and beyond! 3-time State Champion MATHCOUNTS Coach in KPW! [www.competitivemathservices.com](http://www.competitivemathservices.com) or [CompetitiveMathLLC@yahoo.com](mailto:CompetitiveMathLLC@yahoo.com)

**NEED HELP READING, WRITING AND SPELLING?** I am a trained Barton Reading and Spelling Systems tutor. Free screening is provided. On-line tutoring is available. Please contact Lisa Waldrop at 703.887.5618, [lisawaldrop2@gmail.com](mailto:lisawaldrop2@gmail.com) or check out my website: [www.lrw tutoring.webs.com](http://www.lrw tutoring.webs.com)

**SAT/ACT PREPARATION: SAT/ACT** classes for juniors registering now. Students improve several hundred points on the SAT and five or more on the ACT. Strong scores open doors for college admissions and incredible scholarship opportunities. Please call 70.830.7037 or visit [www.JuliaRossPT.com](http://www.JuliaRossPT.com)

**MARY KAY-** The Beauty of You!: Mary Kay offers many ways to enhance your beauty and well-being. Innovative skin care and on-trend color! Let's find your favorites. Contact me: Anna Sempeles at 571-225-1710 or [www.marykay.com/anna](http://www.marykay.com/anna)

**PROFESSIONAL TUTORING:** 20+ years of experience. Grades 1-12 and college. Math through Pre-Calculus/Trigonometry, Science, Spanish, French, Arabic, Chinese, English, History, Study Skills and Organizational Coaching. Comprehensive SAT/ACT Preparation and College Coaching programs. Please call 703.830.7037 or visit [www.JuliaRossPT.com](http://www.JuliaRossPT.com).

**STRING INSTRUMENT LESSONS:** The best time ever! Get a head start on learning to play a string instrument - violin, viola, cello or bass. Starting out from the beginning, or perhaps just trying to improve your technique. Interested? Questions? Contact Roger McKay at 703-503-3127, or [rogeramckay@gmail.com](mailto:rogeramckay@gmail.com)

**PIANO LESSONS IN KPW:** Awesome, affordable with over 35 years of experience.

BA, MA and doctoral work in piano performance. Diverse, fun and challenging programs. Instruction tailored to individual goal and motivation. FREE TRIAL. Call (703)955-0058

**ALTERATIONS FOR WOMEN AND MEN:** Custom dress making. Wedding dresses. Call Bok Kim at 703-323-0979.

**PUZZLED BY PATCHES?** Boy Scout and Girl Scout patches - I'll sew them on for you. \$1.00 per patch. Easy drop off and pickup in KPW. Call or text Louise at 703.867.1649.

### MARIA'S CLEANING SERVICE

"Life's too short-let us do the cleaning" Weekly, bi-weekly, monthly. Licensed-insured-bonded. Free estimate. Contact Maria at 703-856-2512 (cell), 703-378-4059 or [mariasmartcleaning@gmail.com](mailto:mariasmartcleaning@gmail.com)

**FAMILY HAIRCUTS:** Family haircuts, color, and foil highlight. Cut and blow-dry, roller set, and up-style. Call or text to make an appointment with Sandy at 571-594-9869 (Closed Sundays).

**LIFE COACHING:** Feel stuck, overwhelmed, struggling with change? Life coaching helps you find direction. Pandemic rates \$25./hour. Free confidential consultation. Email: [lifecoachingheer@yahoo.com](mailto:lifecoachingheer@yahoo.com) Life coach/retired psychologist, Dr. Kathy Heer.

**AFFORDABLE HOUSE CLEANING:** 15 years of experience; Monday through Saturday; weekly, bi-weekly; move-in/move-out. Free estimates, references can be provided. Call, text or email Giovanna at 571-236-0855 or [gioturquoise12@gmail.com](mailto:gioturquoise12@gmail.com)

**HOME INSPECTOR & MOLD INSPECTOR:** Experienced, ASHI-certified Home Inspector in KPW. Home maintenance, pre-listing, and buyer inspections. Indoor Air Quality testing. Have a mold problem? I will find it! Call/text Tim: 703-401-8881. [www.protect-inspect.com](http://www.protect-inspect.com) or [protect.inspect@gmail.com](mailto:protect.inspect@gmail.com)

**HAPPY HOUNDS DOG SERVICE:** Walking Dogs are happy dogs. Daily walks, let outs, overnight services and holiday care. Great references. Reliable and Trustworthy Service. Licensed and insured. KPW resident for over 20 years. Call Deb at 571.278.7521 or email at [Deb.Billings@yahoo.com](mailto:Deb.Billings@yahoo.com).

